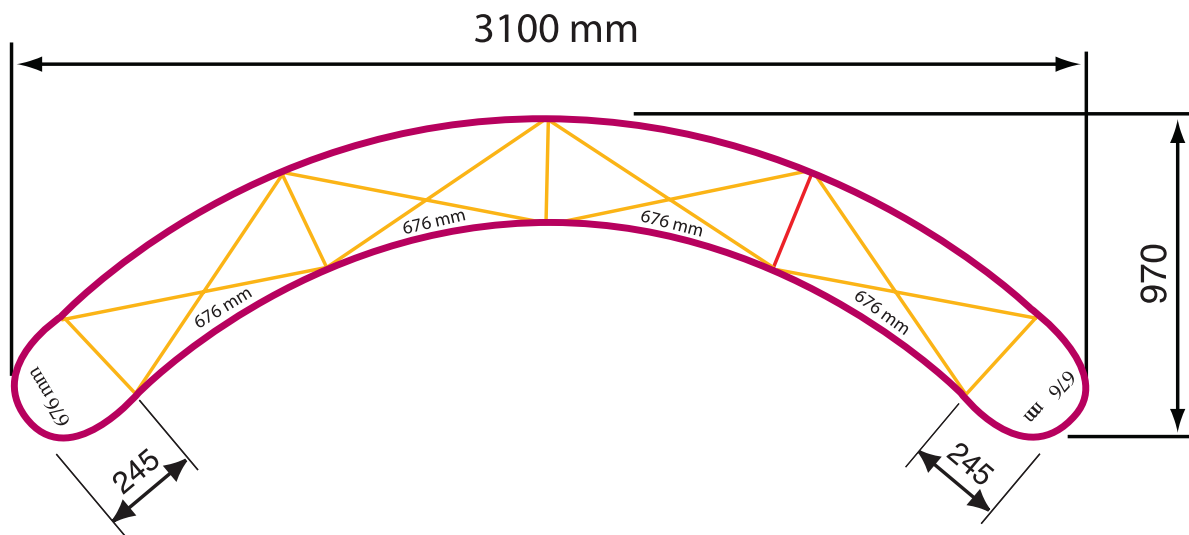
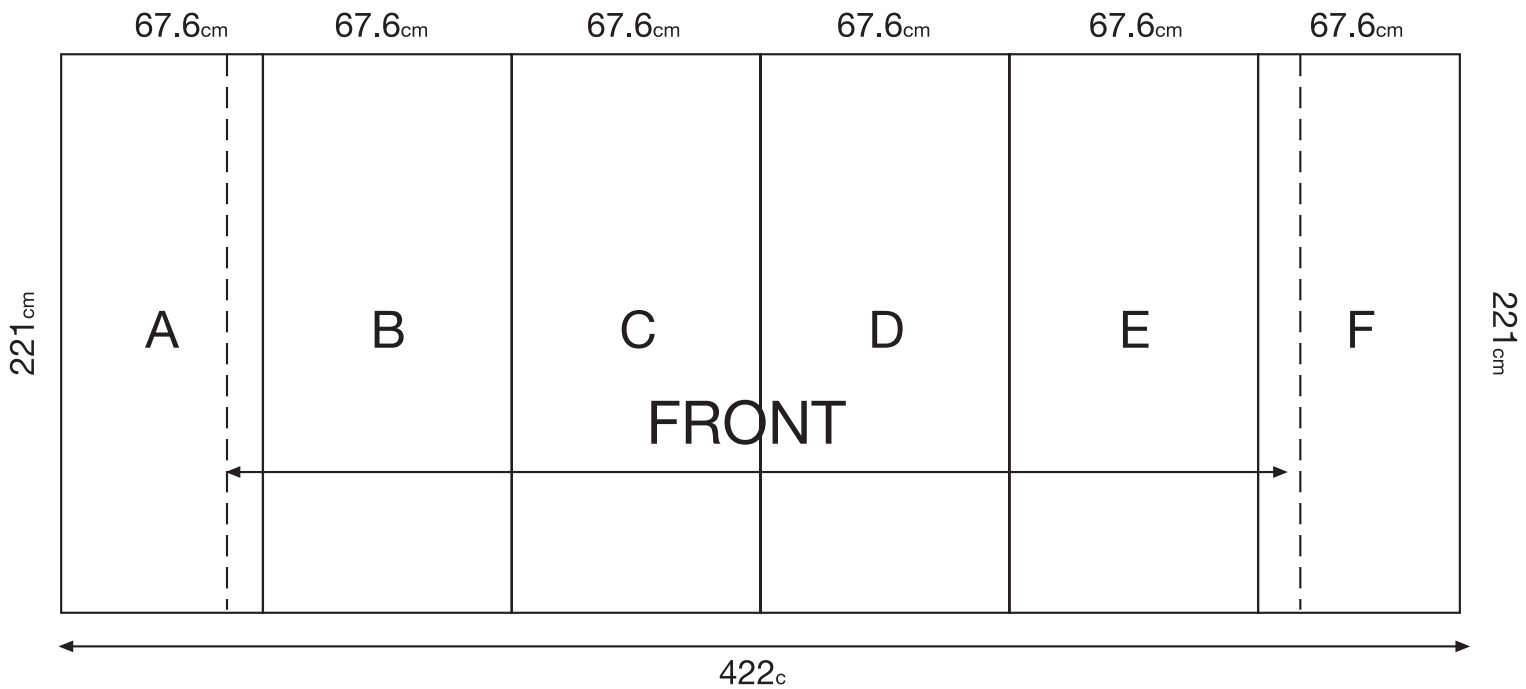


Pop up display 4x3 405.6_{cm} x 221_{cm}



Preparing artwork:

custom: 405.6x221 c"m or proportional, bleed: 1 c"m Nett dimens 403.6x219

The graphic layout is prepared as 1 piece!

and is divided into 6 panels (4 central and 2 side panels) during the printing process.

For the graphic layout, prepare first a grid, where guides mark the bleed and panels division.

Important graphics should be placed on the 4 central panels. The 2 side panels are only partly visible (when viewed from the front). The graphics background should exceed into the bleed area.

it is advisable not to have letters placed on the dividing lines (between panels), but to have them placed (if possible) on either side.